



SAFE TRANSPORTATION
OF LIQUID GOODS
TANKER SERIES





TRUSTWORTHY DANGEROUS GOODS TRANSPORTATION

K.STB E

Fuel Oil Tanker Series

Kässbohrer's precisely engineered K.STB E stands out in fuel oil transportation with its safety, efficiency and manufacturing.

To meet versatile transportation needs, K.STB E from 39 m³ to 45 m³ can be equipped with 1 to 7 compartment options, mechanical and electronic dipstick systems, seal parcel delivery systems, pump, counter, hose reel, and collector.

In compliance with ADR regulations, K.STB E features advanced safety functions including overfill protections.

K.STB E's advanced anti-theft system with special components and digital systems ensure the security of your operations.

With a tare weight starting from 5.150 kg, the vehicle offers operational efficiency and enables lower fuel consumption.

Kässbohrer takes your business to the next level, thanks to its research and development team, the academically trained TÜV and DEKRA certified welders, and the meticulously executed test and analyses.

K.STS 32

Bitumen Tanker

Kässbohrer's Trailer Innovation 2017 Award Category "Safety" winner bitumen tanker semi-trailer K.STS 32 meets the needs of hot petrochemical goods transportation and is the choice of leading European transportation companies.

With its award-winning wireless remote control for discharge, K.STS 32 enables the safest bitumen loading and discharge operations.

With a tare weight of 6.250 kg and tank diameter of 2.000 mm, K.STS 32 offers operational efficiency and enables lower fuel consumption. To meet the needs of versatile working conditions, K.STS 32 can be equipped with different insulation thicknesses of 100 mm to 200 mm, aluminum insulation cover and insulated dome covers.

Kässbohrer K.STS 32 is fully in compliance with ADR regulations.





RELIABLE TRANSPORTATION OF DELICATE LIQUID GOODS

K.STL

Food Tanker Series

Kässbohrer's ATP IN-Class certified K.STL food tanker series has been developed to provide safe liquid food transportation of food stuff goods from vegetable oil and milk whey as well as from chocolate to specific beverages. K.STL meet the highest hygiene standards featuring acid cleaned inner surface and CIP cleaning lines that reach every point inside the tank ensuring zero residue. With 30 m³ volume, 3 compartments and KTL coated steel chassis, the vehicle stands for durability. With an empty weight of 5.750 kg, K.STL enables increased load capacity and is more environmentally friendly by reducing fuel consumption, offering high efficiency whether it is filled or empty.

Addition to K.STL, Kässbohrer also offers pressurized food tanker K.STL P that has been engineered to provide secure transportation of delicate goods such as chocolate, nut cream and specific beverages.

Kässbohrer sets new standards with K.STL P's hygiene features such as 2R quality inner surface, smoothed and polished weldings and CIP cleaning lines with 8 stainless-steel rotating cleaning balls to reach and clean every point of the tank

K.STL P is offered with 32 m³ volume, 3 compartments and electro-polished stainless steel chassis with the tare weight of 7.100 kg and reduces fuel consumption. Addressing versatile operational needs, K.STL P can also be offered with self-heating food type pumps, air filters, sterile box and collector for single discharging.



K.STC

Chemical Tanker Series

Kässbohrer's ADR stainless steel chemical tanker series K.STC can be offered with various volume options from 28 m³ to 37 m³ and is the lightest chemical tanker series on the market including 30 m³. K.STC 30 with 6.500 kg tare weight, presenting unparalleled operational efficiency along with uncompromising safety. With versatile compartment configurations, walk-through baffle possibility, insulation and heating options as well as discharge systems, K.STC ensures safe, easy and continuous operations.

Addressing operational needs in different climate conditions, K.STC features a wide selection of insulation options, including glass wool insulation of 100 mm or 150 mm thickness, stainless steel or aluminium covers and stainless steel insulation rings and FRP end domes. Additionally, K.STC is equipped with heating channels under the tank to keep your goods at the needed temperature.

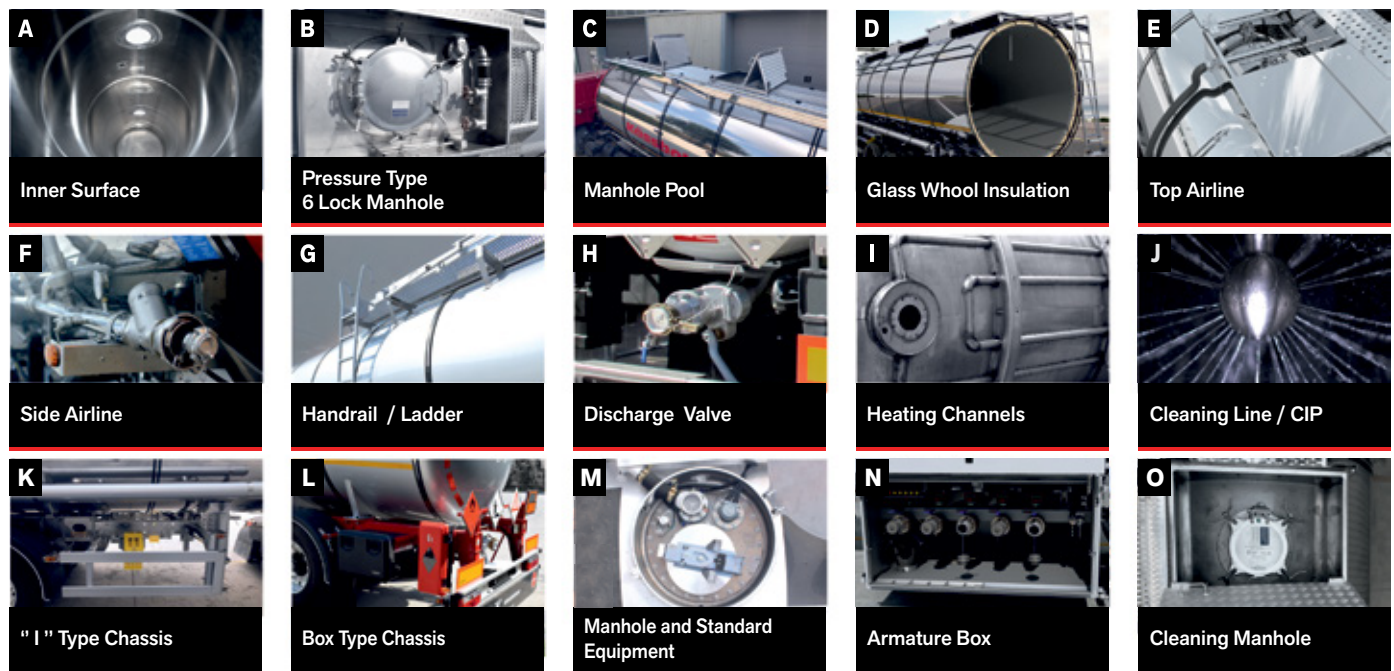
With the R&D team meticulously executing tests and analyses and TÜV and DEKRA certified, academically trained welders, Kässbohrer ensures the highest-quality and efficiency in its Chemical Tanker Series.



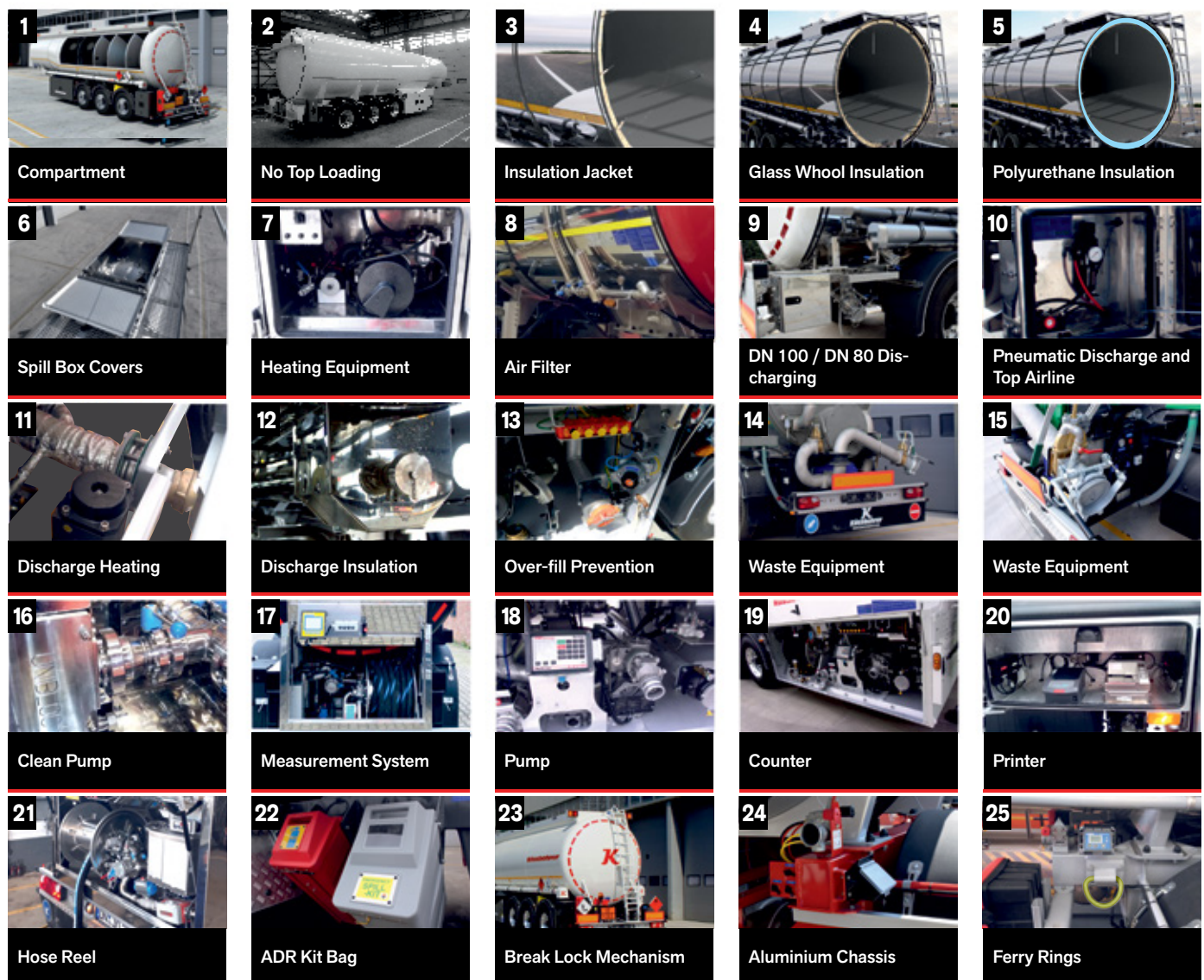
| | | FUEL OIL TANKER | CHEMICAL TANKER | | | |
|--------------------------------|--------------------------------------|---|--|--|--|--|
| | | STB.E 39 | STC EU 30 / 1 - 10 / 24 | STC PR 30 / 1 - 10 / 24 | STC PR 37,5 / 1 - 10 / 24 | |
| TECHNICAL SPECIFICATIONS | PRODUCT | | | | | |
| | PRODUCT TYPE | Fuel Oil Tanker | Chemical Tanker | Chemical Tanker | Chemical Tanker | |
| | EXTERNAL LENGHT | 11.300 mm | 10.530 mm | 10.565 mm | 10.905 mm | |
| | TANK DIAMETER | 2.350 mm | 2.000 mm | 2.000 mm | 2.200 mm | |
| | WHEELBASE | 6.700 mm | 5.900 mm | 5.900 mm | 6.200 mm | |
| | FIFTH WHEEL HEIGHT | 1.220 mm | 1.220 mm | 1.180 mm | 1.180 mm | |
| | TANK THICKNESS | 5,0 mm | 3,0 mm | 3,0 mm | 3,0 mm | |
| | HEIGHT | 3.680 mm | 3.685 mm | 3.725 mm | 3.950 mm | |
| | TARE WEIGHT | 5650 kg | 6.800 kg | 6.550 kg | 7.200 kg | |
| | FRONT OVERHANG SWEEPING RADIUS | 1.300 mm | 1.310 mm | 1.310 mm | 1.350 mm | |
| TANK STRUCTURE | REAR OVERHANG SWEEPING RADIUS | 2.055 mm | 2.300 mm | 2.300 mm | 3.355 mm | |
| | AXLE DISTANCE | 1.310 mm | 1.310 mm | 1.310 mm | 1.310 mm | |
| | ADR TANK CODE | L4BH | L4BH | L4BH | L4BH | |
| | TANK FINISH | - | 2B with acid cleaning | 2B with acid cleaning | 2B with acid cleaning | |
| | TANK MATERIAL | Aluminium | 1.4571 | 1.4571 | 1.4571 | |
| | VOLUME | 39.000 lt | 30.000 lt | 30.000 lt | 37.500 lt | |
| | COMPARTMENT DIVISION | 5 | 1 | 1 | 1 | |
| | BAFFLE PLATE | - | 3 | 3 | 4 | |
| | VACUUM PRESSURE | -0,017 Bar | -0,21 Bar | -0,21 Bar | -0,21 Bar | |
| | WORKING TEMPERATURE | 50 °C | 120 °C | 120 °C | 120 °C | |
| | TEST PRESSURE | 0.35 Bar | 4,0 Bar | 4,0 Bar | 4,0 Bar | |
| | OPERATION PRESSURE | - | 3,0 Bar | 2,6 Bar | 2,6 Bar | |
| | INSULATION THICKNESS | - | 100 mm Glasswool | 100 mm Glasswool | 100 mm Glasswool | |
| | INSULATION COATING | - | Stainless-steel Electropolished | Stainless-steel Electropolished | Stainless-steel Electropolished | |
| | SPILL BOX COVER | - | Aluminium foldable non-insulated | Aluminium foldable %100 flat opening non-insulated | Aluminium foldable %100 flat opening non-insulated | |
| | SPILL BOX MATERIAL | Aluminium | Stainless-steel Electropolished | Stainless-steel Electropolished | Stainless-steel Electropolished | |
| | HOSE PROTECTION BARRIER | - | - | - | - | |
| | HANDRAIL | Aluminium at right, full tank length | Stainless-steel Electropolished, full tank lenght | Stainless-steel Electropolished, full tank lenght | Stainless-steel Electropolished, full tank lenght | |
| | LADDER | Aluminium at the rear right side | Stainless-steel Electropolished, At the rear side on the left | Stainless-steel Electropolished, full tank lenght | Stainless-steel Electropolished, full tank lenght | |
| | CATWALK | Aluminium at right, full tank length | Aluminium full tank lenght and around the manholes | Aluminium full tank lenght and around the manholes | Aluminium full tank lenght and around the manholes | |
| | HOSE CARRIERS | On both sides, 6 meter DN150 Aluminium with spill tray | On both sides, 6 meter DN150 PVC | On both sides, 6 meter DN150 PVC | On both sides, 6 meter DN150 PVC | |
| MATERIAL FILLING AND DISCHARGE | FILLING MANHOLE NUMBER AND DIAMETER | 5 x DN250 | 4 x DN500 | 1 x DN500 | 1 x DN500 | |
| | CLEANING MANHOLE NUMBER AND DIAMETER | - | - | 3 x DN300 | 4 x DN300 | |
| | OVERFILL PREVENTION | 5 pin optical sensor | - | - | - | |
| | SAFETY EQUIPMENT | Breather, Bottom Valve, Steam Adaptor | - | - | - | |
| | BOTTOM VALVE | Pneumatic DN100 | Pneumatic DN80 | Pneumatic DN80 | Pneumatic DN80 | |
| | DISCHARGE LINE LOCATION | At the left | At the right | At the rear right | At the rear right | |
| | DISCHARGE VALVE | - | Butterfly DN80 | Butterfly DN80 | Butterfly DN80 | |
| | DISCHARGE LINE COUPLING | API Couplings | 3" Stainless steel TW coupling | 3" Stainless steel TW coupling | 3" Stainless steel TW coupling | |
| | BOTTOM VALVE INSULATION BOX | - | Included | Included | Included | |
| | HEATING CHANNELS | - | 4 Rows, suitable for water and steam | 4 Rows, suitable for water and steam | 3 Rows, suitable for water and steam | |
| AIRLINES | HEATING SYSTEM | - | Preperation | Preperation | Preperation | |
| | SIDE AIRLINE | - | 2" Stainless-steel electropolished | 2" Stainless-steel electropolished | 2" Stainless-steel electropolished | |
| | TOP AIRLINE | - | 2" Stainless-steel electropolished | 2" Stainless-steel electropolished | 2" Stainless-steel electropolished | |
| | TOP AIRLINE VALVE | - | Stainless-steel Butterfly valve | Stainless-steel Butterfly valve | Stainless-steel Butterfly valve | |
| | CLEANING LINE | - | - | - | - | |
| RUNNING GEAR | CIP | - | - | - | - | |
| | CHASSIS MATERIAL | Aluminium box type half-chassis | Stainless-steel Electropolished | I type Stainless-steel Electropolished | I type Stainless-steel Electropolished | |
| | AXLE BRANDS | 3 x 9 Tons axles, BPW Airlight II with 22.5" discbrakes | 3 x 9 Tons axles, BPW Airlight II with 22.5" discbrakes | 3 x 9 Tons axles, BPW Airlight II with Aluminium hub, 22.5" discbrakes | 3 x 9 Tons axles, BPW Airlight II with Aluminium hub, 22.5" discbrakes | |
| | AXLE LIFTING | 1st axle lifting with ECAS control | 1st axle lifting with ECAS control | 1st axle lifting with ECAS control | 1st axle lifting with ECAS control | |
| | MECHANICAL LANDING LEG | 2 x 12 ton, steel JOST | 2 x 12 ton, steel JOST | 2 x 12 ton, Aluminium pinned drop-down | 2 x 12 ton, Aluminium pinned drop-down | |
| | ELECTRONIC SUSPENSION | Knorr Bremse, EBS 2S/2M with RSS | Knorr Bremse, EBS 2S/2M with RSS | Knorr Bremse, EBS 2S/2M with RSS | Knorr Bremse, EBS 2S/2M with RSS | |
| | ARMATUREN BOX | At the left, aluminium | - | - | - | |
| | TOOL BOX | At the left, aluminium | Polished stainless-steel 1.100 mm x 450 mm x 450 mm on the left side | Polished Stainless-steel 450 mm x 450 mm x 550 mm on the left side | Polished Stainless-steel 450 mm x 450 mm x 550 mm on the left side | |

| ADBLUE TANKER | MOLASSE TANKER | BITUMEN TANKER | FOODSTUFF TANKER | |
|---|---|---|---|--|
| STC AB 28 / 1 - 10 / 24 | STC M 32 / 1 - 10 / 24 | STS 32 / 1 - 10 / 24 | STL 30 / 3 - 10 / 24 | STL P 32 / 3 - 10 / 24 |
| Ad-blue Tanker | Molasse Tanker | Bitumen Tanker | Foodstuff Tanker | Foodstuff Tanker |
| 9.800 mm | 10.895 mm | 11.250 mm | 10.300 mm | 11.610 mm |
| 2.000 mm | 2.000 mm | 2.000 mm | 2.000 mm | 2.000 mm |
| 5.600 mm | 6.050 mm | 6.300 mm | 5.800 mm | 6.400 mm |
| 1.220 mm | 1.220 mm | 1.220 mm | 1.220 mm | 1.180 mm |
| 3,0 mm | 3,0 mm | Min 3,0 mm | 2,0 mm | 2,5 mm |
| 3.700 mm | 3.475 mm | 3.600 mm | 3.650 mm | 3.750 mm |
| 5.450 kg | 6.300 kg | 7.250 kg | 5.750 kg | 7.120 kg |
| 1.200 mm | 1.540 mm | 1.370 mm | 1.150 mm | 1.310 mm |
| 2.300 mm | 2.345 mm | 2.350 mm | 2.100 mm | 2.240 mm |
| 1.310 mm | 1.310 mm | 1.310 mm | 1.310 mm | 1.310 mm |
| - | - | L4BH | - | - |
| 2B | 2B | 2B | 2B with acid cleaning | 2R |
| 1.4301 | 1.4301 | 1.4541 | 1.4301 | 1.4301 |
| 28.000 lt | 32.000 lt | 32.000 lt | 30.000 lt | 32.000 lt |
| 1 | 1 | 1 | 3 | 3 |
| 2 | 4 | 4 | - | - |
| -0,017 Bar | -0,017 Bar | -0,21 Bars | - | -0,017 Bars |
| 80 °C | 80 °C | 250 °C | 120 °C | 120 °C |
| 0.1 Bar | 0.1 Bar | 4,0 Bar | - | 3,0 Bars |
| - | - | 2,0 Bar | - | 2,0 Bars |
| 100 mm Glasswool | 100 mm Glasswool | 100 mm Glasswool | 50 mm Polyurethane | 100 mm Glasswool |
| Painted Aluminium | Stainless-steel electropolished | Painted Aluminium | Stainless-steel Electropolished | Stainless-steel Electropolished |
| Aluminium foldable non-insulated | - | Not-Included | Stainless steel foldable non-insulated | Stainless steel foldable insulated |
| Stainless-steel Electropolished | Stainless-steel | Stainless-steel | Stainless-steel Electropolished | Stainless-steel Electropolished |
| - | - | - | On the right side | On the left side |
| Aluminium around the manhole | Aluminium full tank lenght | Aluminium around the manhole | Stainless-steel Electropolished, full tank lenght | Stainless-steel Electropolished, full tank lenght |
| Aluminium at the right side | Aluminium at the rear right side | Aluminium at the right side | Stainless-steel Electropolished, At the rear side on the left | Stainless-steel Electropolished, At the rear side on the right |
| Aluminium only around the manhol | Aluminium full tank lenght and around the manholes | Aluminium only around the manhol | Aluminium full tank lenght and around the manholes | Aluminium full tank lenght and around the manholes |
| On both sides, 7.5m DN150 Aluminium | Not-Included | 6 m open type aluminium | Not-Included | On both sides, 6 meter DN150 stainless-steel |
| 1 x DN460 | 5 x DN460 | 1 x DN500 | 3 x DN500 | 3 x DN500 |
| - | - | - | - | - |
| - | - | - | - | - |
| - | - | - | - | - |
| - | 4" Stainless Steel Ball Valve | 4" Steel Valve with Wheel Chark Control | 4" Stainless Steel Butterfly Valves | 3" Stainless Steel Cleanflow Valves |
| At the rear | At the rear | At the rear | At the rear | At the rear inside the stainless steel electropolished armatur box |
| 3" ball valve, stainless steel | at right and left side 3" stainless steel ball valve | 4" shutoff valve | 4" Stainless steel butterfly Valve | 3"/ 4" Stainless steel butterfly Valve |
| 3" Stainless steel TW coupling | 3" Stainless steel camlock coupling | 3" Brass TW coupling | 4" Rosista Coupling | 3" Rosista Coupling |
| - | - | - | Included | Included |
| - | 2 Rows, suitable for water | - | - | 3 Rows, suitable for water and steam |
| - | Preperation | - | - | Preperation |
| - | - | 2" Aluminium electropolished | - | 2" Stainless-steel electropolished |
| - | - | 2" Aluminium electropolished | - | 2" Stainless-steel electropolished |
| - | - | 2 x Stainless-steel sleeve valve | - | Stainless-steel Butterfly valve |
| - | - | - | Included Stainless steel DN50/25 | Included Stainless steel DN50/25 as joint line with airline |
| - | - | - | With 5 cleaning balls | With 8 cleaning balls |
| Aluminium box type | Steel I type KTL coated | Aluminium box type | Steel I type KTL coated | I type Stainless-steel Electropolished |
| 3 x 9 Tons axles, BPW Airlight II with 19.5" discbrakes | 3 x 9 Tons axles, BPW EAC with 22.5" discbrakes | 3 x 9 Tons axles, BPW Airlight II with 22.5" discbrakes | 3 x 9 Tons axles, BPW EAC with 22.5" discbrakes | 3 x 9 Tons axles, BPW Airlight II with 22.5" discbrakes |
| 1st and 3rd axle lifting with ECAS control | 1st axle lifting with ECAS control | 1st axle lifting with ECAS control | 1st axle lifting with ECAS control | 1st axle lifting with ECAS control |
| 2 x 12 ton, steel JOST | 2 x 12 ton, steel JOST | 2 x 12 ton, steel JOST | 2 x 12 ton, steel JOST | 2 x 12 ton, Aluminium pinned drop-down |
| Knorr Bremse, EBS 2S/2M with RSS | Knorr Bremse, EBS 2S/2M with RSS | Knorr Bremse, EBS 2S/2M with RSS | Knorr Bremse, EBS 2S/2M with RSS | Knorr Bremse, EBS 2S/2M with RSS |
| - | At the rear right and left side, stainless steel | - | At the rear, stainless steel | At the rear, between the chassis beams, stainless steel |
| 2 x Plastic tool box, 580 x 400 x 450 | 1 x Plastic tool box, 1.000 x 600 x 500 and Steel KTL coated food box 1.200 x 600 x 500 | 1 x Plastic tool box, 400 x 480 x 600 | - | Stainless-steel 1.100 mm x 450 mm x 450 mm on the left side |

STANDARD FEATURES



OPTIONS





WE KNOW YOUR KÄSSBOHRER **AND WE WANT TO TAKE CARE OF IT**

Kässbohrer develops vehicles that push the boundaries of innovation and builds them to last. As our products are attuned to the needs of our customers worldwide, so are our services.

Taking care of your needs where ever your operations are in Europe, 95% of our ever-growing competent after-sales service network is certified to serve Europe's widest product range. Kässbohrer's website is constantly updated with the latest information for your convenience.

With K-Advance Care Service Packages tailored to each customer's operational needs as well as a 24/7 Kässbohrer Hotline available in 27 countries and 23 languages, Kässbohrer's after-sales services are attuned to meet the versatile requirements.





KÄSSBOHRER PRODUCTION WORLDWIDE

Powered by its motto “Enginuity”, Kässbohrer pushes the boundaries of vehicle engineering to meet the versatile needs of its customers worldwide. Winner of the prestigious Trailer Innovation Award, Kässbohrer vehicle quality is secured by the technological expertise of its production processes.

For now and in the future, Kässbohrer will continue developing products and services to take your business to the next level.



Ulm Plant | Germany

In 2017, Kässbohrer returned back home with its production facility investment in Ulm. Operating in 35.000 m², Ulm Plant serves as the main production facility for Southern Germany and the neighboring countries. Fully offering and servicing Kässbohrer's incomparably product range as the main sales and after-sales center, Ulm plant is also our spare parts warehouse.



Goch Plant | Germany

Since 2002, Goch Factory, operating in a total area of 108.000 m² is one of two production facilities in Germany. Serving as the main production and PDI center for Northern Europe, Goch Facility serves as after-sales and sales center for Nordrhein Westfalen Region as well as our spare parts warehouse.



Adapazari Plant | Turkey

Adapazari is Kässbohrer's biggest production plant with a total production area of 365.000 m² and has a total production capacity of 20.000 units. Adapazari plant hosts R&D and prototype test centers on the campus. Last but not least, an area of 3.500 m² enables the production and testing of more than one prototype vehicle at a time.

Kässbohrer Sales GmbH

Ulm | Im Katzelwinkel 5, 88480 Achstetten, Germany | **T** +49 (0) 7392 96797-0 | **F** +49 (0) 7392 96797-67

Goch | Siemensstrasse 74, 47574 Germany | **T** +49 (0) 2823 9721-0 | **F** +49 (0) 2823 9721-21 | **E** info@kaessbohrer.com | www.kaessbohrer.com

Kässbohrer semi-trailers are manufactured according to lean production and quality principles in consideration of total cost of ownership.

Kässbohrer reserves the right to alter the product specification. Visual and technical data subject to change according to vehicle configuration. v4 Sep 2022